

Anti-ITGB6 hlgG1 Antibody(SGN-B6A)

Product information

GM-81622AB-10	10 µg
GM-81622AB-100	100 µg
GM-81622AB-1000	1 mg

Antibody Information

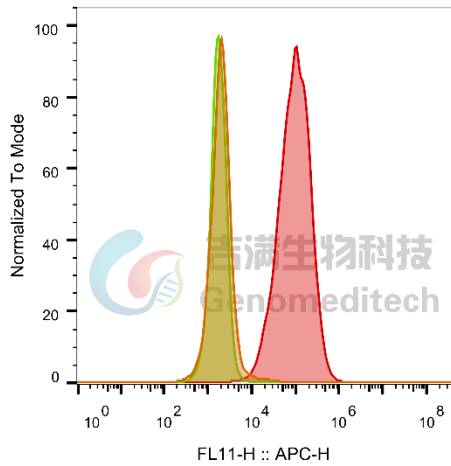
Species Reactivity	Human
Clone	SGN-B6A
Source/Isotype	Monoclonal human IgG1/k
Application	Flow cytometry
Specificity	Detects ITGB6
Gene	ITGB6
Other Names	Integrin beta-6
Gene ID	3694(Human)
Background	<p>ITGB6 is the $\beta 6$ subunit of the integrin $\alpha v\beta 6$, which is a crucial subunit controlling the expression of the entire heterodimer $\alpha v\beta 6$. (ITGB6) is the limiting subunit for the formation of the $\alpha v\beta 6$ integrin, as it can only bind with αv. Therefore, the expression of the $\alpha v\beta 6$ integrin depends on the transcriptional activity of the $\beta 6$ integrin gene, which is only expressed in epithelial cells. The integrin $\alpha v\beta 6$ is exclusively expressed on epithelial cells and is expressed at low levels in most normal healthy tissues. However, it is frequently upregulated in diseases such as cancer and fibrosis, with an estimated one-third of all solid tumors showing upregulation, which is associated with disease progression and poor prognosis. Multiple studies have shown that the severity of many cancers, including lung, breast, colon, gastric, and ovarian cancer, is related to the expression of $\alpha v\beta 6$. In summary, $\alpha v\beta 6$ plays a regulatory role in epithelial remodeling during development, tissue repair, and tumor formation.</p>
Storage	Store at 2-8°C short term (1-2 weeks).Store at $\leq -20^{\circ}\text{C}$ long term. Avoid repeated freeze-thaw.
Formulation	Phosphate-buffered solution, pH 7.2.
Endotoxin	< 1 EU/mg, determined by LAL gel clotting assay

Version:3.1 Revision Date:12/25/2023

Data Examples

Flow cytometry

The recommended usage range is 0.5-4 μg per test. H_ITGB6 CHO-K1 Cell Line(Catalog # GM-C29044) was stained with Anti-ITGB6 hIgG1 Antibody(SGN-B6A) (Catalog # GM-81622AB) or isotype control antibody, followed by anti-Human IgG APC-conjugated Secondary Antibody .



SampleID	Geometric Mean : FL11-H
CHO-K1 anti-ITGB6+APC-2nd Ab	1977
CHO-K1 H_ITGB6 H_IgG+APC-2nd Ab	1733
CHO-K1 H_ITGB6 anti-ITGB6+APC-2nd Ab	92617

Fig. FACS